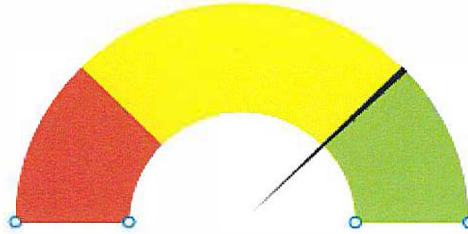


UCSD's COVID-19 Transition Metric Guidance



The Urbandale Community School District must have board-approved Return to Learn plans with three distinct instructional learning models. Those plans must contain provisions that in-person, on-site instruction is the presumed method of instruction. We must also have plans in place and ready to implement for two additional options: 1) a hybrid model (part time in school and part time online) and 2) a Required Continual Learning model (fully online). The Urbandale Community School District has also offered a Remote option, where parents must commit to for at least the first semester.

The Urbandale Community School District (UCSD) Board of Education takes seriously its role in the implementation of SF 2310. According to that legislation, the Board is directed to weigh school and/or district closure as follows:

Sec. 14. SCHOOL DISTRICT CLOSURES DURING THE 2020-2021 SCHOOL YEAR. For the school year beginning July 1, 2020, and ending June 30, 2021, if the governor proclaims a public health disaster pursuant to section 29C.6, the board of directors of a school district may authorize closure of the school district or any school district attendance center due to an outbreak of COVID-19 in the school district or any school district attendance center. School districts are encouraged to follow guidelines issued by the centers for disease control and prevention of the United States department of health and human services and the Iowa department of public health, and may consult with the local board of health when determining social distancing measures or authorizing a school closure.

The Iowa Department of Education, in collaboration with the Iowa Department of Public Health, have provided school district's with reopening guidance. In a discussion with the Iowa Department of Education and the Governor's office, they made it clear that the metrics they provided were "guidance" and not mandates. It is unclear how district's choosing not to follow this "guidance" can be given consequences.

In accordance with SF 2310, local Boards are encouraged to review other sources of information in addressing the potential move to a fully online environment. In doing so, rates of positivity were investigated. A recommendation from Dr. Robert Redfield, Director of the Centers for Disease Control and Prevention indicated that the number to transition to fully online should be considered at 5% and further describes that number is in line with the WHO. Those same sentiments were echoed by Dr. Deborah Birx, Coronavirus Response Coordinator for the White House Coronavirus Task Force. Dr. Eli Perencevich, Professor of Epidemiology at the University of Iowa indicates a rate of 5% should be considered, and perhaps a rate as low as 3%. Dr. Jerome Adams, the Surgeon General of the United States, indicates that a positivity rate of 10% should be the considered rate for school or district closure. No other observed rates were found that are like those that are being promoted by the IDOE or IDPH at a 15% positivity rate in conjunction with increased student absences, or 20% overall. The CDC has set no specific benchmark.

UCSD's Board of Education is not comfortable with the provided guidance and have created board-approved metrics that the District will use to make decisions to move to/from different instructional learning models. The District believes that only identifying a single indicator (positivity rate) is insufficient to make school-district-based decisions. With this belief in mind, UCSD will also monitor student absences, staff absences and availability, PPE availability, and 14 day trends in Polk County COVID-19 data in the areas of total positive cases, hospitalization rates, and COVID-19 related death rates. We recognize that all these measures can be imprecise yet they provide us with alternative and supportive ways to analyze and characterize the trajectory of COVID-19 activity in the District and greater community. When positivity rates and the "Additional Data Considerations" are reached under each level (Green, Yellow, Red), the UCSD Board of Education will convene a special meeting to consider moving into a different instructional learning model.

It is important to keep in mind the important role that our family and community members play in keeping our schools and community safe. Wearing face coverings in public, practicing physical distancing, frequent, correct hand washing, minimizing your time out in public, limiting the number of people you interact with, and staying home when you are sick are suggestions we encourage. Thank you for all you are doing in this regard as well as for your ongoing support!

The following pages are the Board-approved decision-making metrics for consideration of movement between UCSD's Return to Learn plans. As more information becomes available about COVID-19, this plan may be modified accordingly.

COVID-19 Green: Low Spread Risk (0-4.9% Positivity Rate in Polk County on average over 14 days)

R2L Instructional Delivery Model		
ADDITIONAL DATA CONSIDERATIONS	On-Site Learning Model or Remote Learning (if selected by parent choice)	SUGGESTED STRATEGIES
<p>Positive Tests Results:</p> <ul style="list-style-type: none"> *1 student or staff member *Multiple students or staff *5> students or staff in 1 bldg *5> students or staff in 4 or more buildings <p>Students absences 10% or > over 5 consec. days</p> <p>Adequate staff to educate students</p> <p>Adequate PPE is on hand</p> <p>14 days of increased trends in Polk County COVID-19:</p> <ul style="list-style-type: none"> - # of cases - # of hospitalization (10%) - # of deaths 	<p>Close cohort/classroom for 1 or more days</p> <p>Close impacted cohort/school 1 or more days</p> <p>Close building for 10-14 days</p> <p>Close district for 10-14 days</p> <p>Consider closure of school or district **</p> <p>Consider closure of school or district **</p> <p>Close building or district</p> <p>Consider going into Hybrid Learning Model or Required Continual Learning (online) Model</p>	<ul style="list-style-type: none"> * Stay home if you are sick or exposed to someone confirmed to have COVID-19: seek medical evaluation * Monitor personal symptom checks daily * Social distance of 6 feet if/when possible * Practice frequent handwashing with soap for 20 seconds or use hand sanitizer when handwashing is inaccessible * Wear required face coverings and take scheduled breaks * Maintain frequent cleaning schedule * Monitor absenteeism among teachers, staff, and students * Staggered passing time and one-direction walkways * Limit large group gatherings, incl. visitors to schools * Keep students in cohorts as much as possible * Provided contact tracing identifies no one else impacted * Continue ongoing collaboration and consultation with local health officials
<p>** Either when comparing the 2019-20 Average Daily Attendance (ADA) for five consecutive days, OR when we don't have the staff to meet the needs of our students, these data points will trigger a conversation about temporary closure. The ADA during 2019-20 was between 93-96%.</p>		

COVID-19 YELLOW: Moderate Spread Risk (5-9.9% Positivity Rate in Polk County on average over 14 days)

	R2L Instructional Delivery Model	
ADDITIONAL DATA CONSIDERATIONS	Hybrid Instructional Model or Remote (if selected by parent choice)	SUGGESTED STRATEGIES
<p>Positive Tests Results:</p> <p>*1 student or staff member</p> <p>*Multiple students or staff</p> <p>*5> students or staff in 1 bldg</p> <p>*5> students or staff in 4 or more buildings</p> <p>Students absences 10% or > over 5 consec. days</p> <p>Adequate staff to educate students</p> <p>Adequate PPE is on hand</p> <p>14 days of decreased or increased trends in Polk County COVID-19:</p> <p>- # of new cases</p> <p>- # of hospitalization (10%<)</p> <p>- # of deaths</p>	<p>Close cohort/classroom for 1 or more days</p> <p>Close impacted cohort/school 1 or more days</p> <p>Close building for 10-14 days</p> <p>Close district for 10-14 days</p> <p>Consider closure of school or district **</p> <p>Consider closure of school or district **</p> <p>Close building or district if PPE not available</p> <p>Consider going back into On-Site Learning Model or Required Continual Learning (online) Model</p>	<p>* Stay home if you are sick or exposed to someone confirmed to have COVID-19; seek medical evaluation</p> <p>* Monitor personal symptom checks daily</p> <p>* Social distance of 6 feet if/when possible</p> <p>* Practice frequent handwashing with soap for 20 seconds or use hand sanitizer when handwashing is inaccessible</p> <p>* Wear required face coverings and take scheduled breaks</p> <p>* Staggered passing time and one-direction walkways</p> <p>* Maintain frequent cleaning schedule</p> <p>* Monitor absenteeism among teachers, staff and students</p> <p>* Limit large group gatherings incl. visitors to school</p> <p>* Limit visitors to school buildings</p> <p>* Provided contact tracing identifies no one else impacted</p> <p>* Continue ongoing collaboration and consultation with local health officials</p>
<p>** Either when comparing the 2019-20 Average Daily Attendance (ADA) for five consecutive days, OR when we don't have the staff to meet the needs of our students, these data points will trigger a conversation about temporary closure. The ADA during 2019-20 was between 93-96%.</p>		

COVID-19 RED: Significant Spread Risk (10% or > Positivity Rate in Polk County on average over 14 days)

COVID-19 RED: Significant Spread Risk (10% or > Positivity Rate in Polk County on average over 14 days)		
ADDITIONAL DATA CONSIDERATIONS	R2L Instructional Delivery Model	SUGGESTED STRATEGIES
	Required Continual Learning (online) or Remote Learning (if selected by parent choice)	
<p>Positive Tests Results:</p> <ul style="list-style-type: none"> *1 student or staff member *Multiple students or staff *5> students or staff in 1 bldg *5> students or staff in 4 or more buildings <p>Students absences 10% or > over 5 consec. days</p> <p>Adequate staff to educate students</p> <p>Adequate PPE is on hand</p> <p>14 days of decreased trends in Polk County COVID-19:</p> <ul style="list-style-type: none"> - # of new cases - # of hospitalization (10%<) - # of deaths 	<p>Close cohort/classroom for 1 or more days</p> <p>Close impacted cohort/school 1 or more days</p> <p>Close building for 10-14 days</p> <p>Close district for 10-14 days</p> <p>Consider closure of school or district **</p> <p>Consider closure of school or district **</p> <p>Close building or district if PPE not available</p> <p>Consider going back into Hybrid Learning Model or On-Site Learning Model</p>	<ul style="list-style-type: none"> * Monitor personal symptom checks daily; seek an evaluation by a health care provider if/when symptomatic * Self-isolate if you come in contact with symptomatic people * Work from home if you can * Suggested to wear face coverings when out in public * Social distance of 6 feet if/when possible * Practice frequent handwashing with soap for 20 seconds or use hand sanitizer when handwashing is inaccessible * Extreme limitations to people in buildings * Enhanced cleaning and disinfection, especially for high contact surfaces and locations. * Continue ongoing collaboration and consultation with local health officials
<p>** Either when comparing the 2019-20 Average Daily Attendance (ADA) for five consecutive days, OR when we don't have the staff to serve the needs of our students, these data points will trigger a conversation about temporary closure. The ADA during 2019-20 was between 93-96%.</p>		