

# **Urbandale Community School District History**



# **URBANDALE**

**Updated 2025**

# TABLE OF CONTENTS

## **Overview of UCSD 01**

A brief look at what the Urbandale Community School District has to offer its stakeholders, students, and community.

## **Era 1: Beginnings of the Community 02**

An encapsulation of the years 1916-1952. How the community grew into a city, resulting in the creation of Urbandale Community School District.

## **Era 2: The Booms 06**

An encapsulation of the years 1952-2000. How Urbandale Community School District was affected by first, the Baby Boom and second, the Echo Boom.

## **Era 3: The 21st Century 12**

An encapsulation of the years 2001-Present. The ways Urbandale Community School District has adjusted to new needs within the district and community.

## **Era 4: The Future 17**

With new schools and facilities built, the district is evaluating how best to use its remaining open land and vacant properties

## **Building History 18**

A brief timeline of the developments the Urbandale Community School District buildings have experienced.

## **UCSD Superintendents 21**

A timeline of the superintendents who have resided over the Urbandale Community School District.

## **School Board Members 22**

A timeline of the school board members who have dedicated their time to bettering the Urbandale Community School District.

## **Data 26**

Visual data that shows the Open Enrollment numbers throughout the years and the number of languages spoken by UCSD families.

## **Urbandale School Song 27**

The Urbandale School Song, "Confidence," is proudly performed by both vocal and instrumental groups at various sporting events.

## **Sources 28**

A list of sources where historical information and data was pulled from by participants in this project.



# OVERVIEW OF UCSD

*This majority of this history has been authored by Dean Hatch, Urbandale High School Class of '67 graduate and a long-time employee of the school district until his retirement in 2001. Updates were provided in 2017, by former Superintendent Dr. Greg Robinson, former Superintendent Mr. Steve Bass, and Communications Manager, Dena Claire. Recent updates have been provided by Superintendent Rosalie Daca and Communications Assistant, Katie Noel. We are open to any feedback or revisions. Our thanks to all!*

The Urbandale Community School District (UCSD) is a suburban district in the northwest metropolitan area of Des Moines, Iowa, comprised of four elementary schools, one middle school, one high school and one alternative high school. The City of Urbandale currently has a population in excess of 47,000. The school district covers approximately eight square miles within the city and has

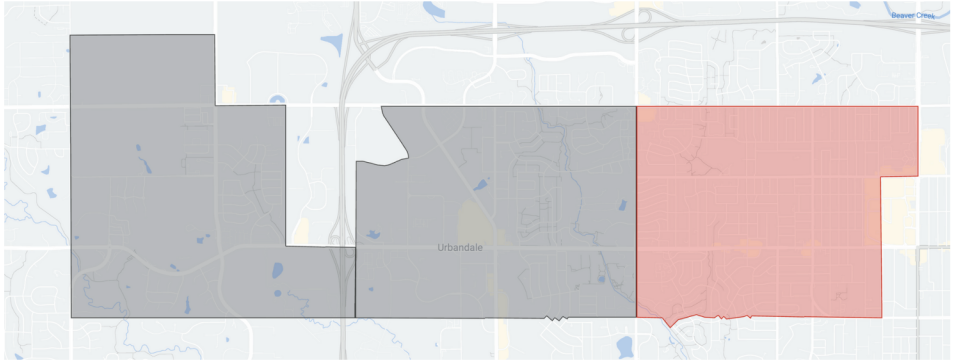
an enrollment of approximately 4,200 students in grades PK-12 with over 50 languages spoken throughout the district.

UCSD offers comprehensive preschool, before/after school childcare as part of Adventuretime Family Services, an alternative learning program through Metro West Learning Academy, and the Community Education Program. Families with elementary students can choose to either attend their neighborhood elementary school that operates on a traditional calendar or attend Karen Acres Elementary that operates on a flexible calendar (year-round school). This is what the district looks like now, but let's take a moment to consider our past and the vision for creating the world-class educational system we have the opportunity to enjoy today.



Urbandale High School, 2023

# Era 1: 1916–1952



## ***“The beginnings of the community”***

In 1858, the first settlers came to the area northwest of Des Moines, now known as Urbandale. The land was mostly agricultural with farms and orchards the mainstays of the area. Three farm homes of note remain in Urbandale through the end of the 19th century and beginning of the 20th century:

*Flynn Mansion* (1870) is the Italianate style brick home now part of the Living History Farms. Originally built by entrepreneur Martin Flynn, this property was a state prison farm prior to its purchase and restoration by Living History Farms.

*The home located at the northwest corner of 72nd and Douglas* (1871) was part of the farm purchased by John MacRae in 1910. This may have been the location of a horse stable in the 1880's.

*Olmsted-Urban House* (1904) is currently the home of the Urbandale Historical Society, which is located at 70th and Airline. This was the early home of prominent families helping in the establishment of the city and schools, the Olmsted's and the Urban's. The Urbandale Historical Society purchased the house in 1987. It was restored and furnished as more homes appeared in the 1920's and 1930's.

Though there is no known documentation of the origination of the name Urbandale, the accepted explanation for the name comes from the Inter-Urban rail line, which operated, between Des Moines and Boone at the turn of the century. In 1904, a trolley line was constructed connecting the area with Beaverdale, then south to Des Moines. The line operated along what is now Urbandale Avenue and discontinued operation in 1951.

## ERA 1: 1916-1952

This Urbandale Line was an important connection for travel from Des Moines to Urbandale. The Trolley Park at 70th and Roseland memorializes the trolley terminal and its turnaround at this site.

Coal mining was also prevalent in the area. Between 1920 and 1950, several coal mines were in the area including the Urbandale Coal Company Mine. As later noted, Karen Acres School is built on land mined by the Des Moines Ice and Fuel Coal Company

### ***Pre-World War I: "One-room schools"***

Prior to the formation of the district, students in the area now known as Urbandale, attended one-room schools. Three schools served students in the vicinity: *McDivitt Grove School* was located near the McDivitt Cemetery north of Meredith Drive at 70th Street; Center School was originally constructed near 114th Street, prior to its move to 100th and Meredith; and Webster School was located at 128th Street and Aurora Avenue, the site of the current Webster Elementary School (note: This new facility, opened in 2006, was named for the one-room school originally on the site). Students attending school prior to World War I often completed their formal education at the eighth grade. High school attendance was not mandatory. Many of the students who did wish to continue their schooling, rode the trolley from Urbandale each day to attend a high school in Des Moines.



Original Two Room School at 70th & Douglas

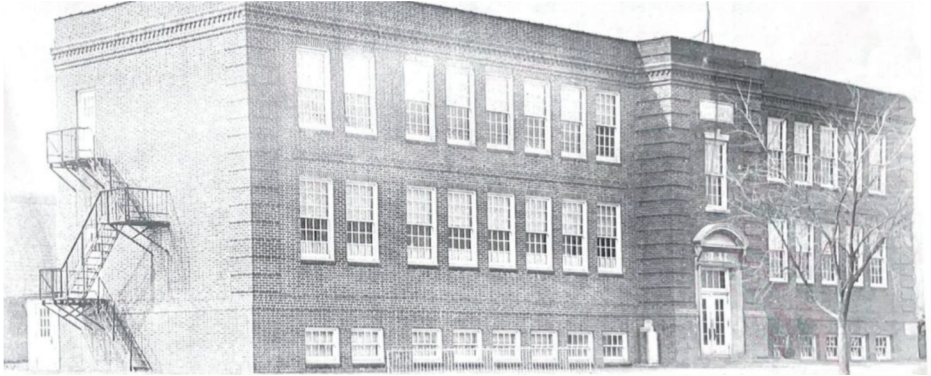
### ***1916-1952: "The first school buildings"***

As the population in the area grew, with the 1920 census indicating a population of 298, the citizens wanted to improve educational opportunities for their students. In 1916, Johnston Station, north of Urbandale on Merle Hay Road, was preparing to absorb the students in the Urbandale area into their schools.

The Urbandale parents wanted their children to attend school closer to home; thus, Urbandale area citizens organized to raise money to build a wood frame, two-room school on the southwest corner of 70th Street and Douglas Avenue. Students in grades 1-4 were in one room and students in grades 5-8 in the other.

The proposed Urbandale Community School District, bound on the north by Meredith Drive and on the south by Urbandale Avenue. The west boundary was 86th Street and the east was both sides of 64th Street from Urbandale Avenue to Aurora Avenue, and east to Merle Hay Road from Aurora Avenue to Meredith Drive, less than 4 square miles.

## ERA 1: 1916-1952



Original Urbandale High School, 1925

The City of Urbandale was officially incorporated in 1917, in order to establish the school district. The Urbandale tradition of the utilizing our schools as community buildings began as the two-room school also served as the meeting place for the city council until 1944.

A new brick, three-story school building was constructed in 1925, after the wood frame two-room building was moved nearer to Monroe Court. This was a typical brick school building with the first floor below grade to the windows, thus creating 2 ½ stories of the building above ground level.

An addition was constructed south of the existing building in 1934-35. The first Urbandale High School graduating class in 1937 consisted of four students (note: prior to 1937, students wanting to attend high school took classes in Des Moines, Johnston or Grimes with Urbandale helping with the tuition).

Works Progress Administration (WPA) funds and labor were used in

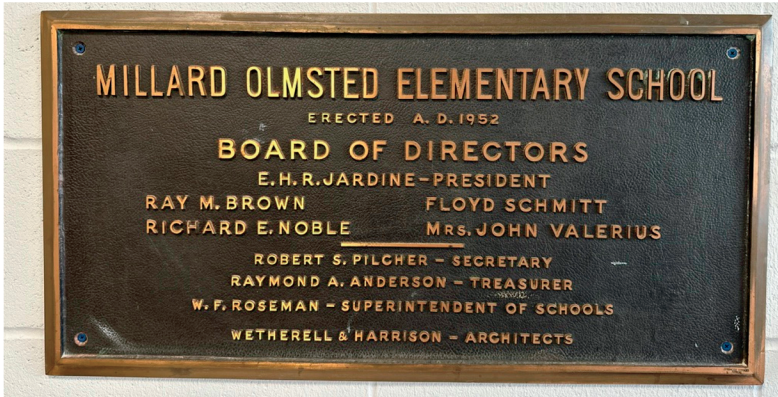
the construction of the first gymnasium in 1940 west of the brick building. The gym included a stage for performances and community meetings. The original football/athletic field was west of the gym. Six-man football was a popular sport in the 1940's.

This 70th and Douglas site continued as a school facility until the new Urbandale Junior High was occupied in 1974. In 1977, the facilities were demolished and the land was sold. This site is now a Walgreen's Drugstore and a nearby strip of small businesses.

The Urbandale High School Corner Commission established a memorial on the SW corner of 70th and Douglas to commemorate the site. The 1925 cornerstone from the original brick building and plaques commemorating the 1937-1966 graduating classes are part of the memorial. A sculpture obelisk depicts, among other items, the original 1916 two-room building, the brick building, and the Bluejay mascot.



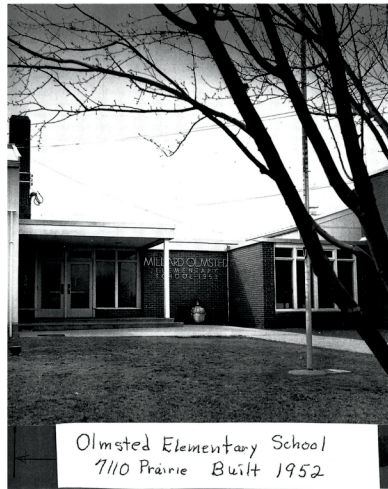
## ERA 1: 1916-1952



Olmsted Elementary School Plaque on Display in Olmsted Entry Way



70th & Douglas Memorial

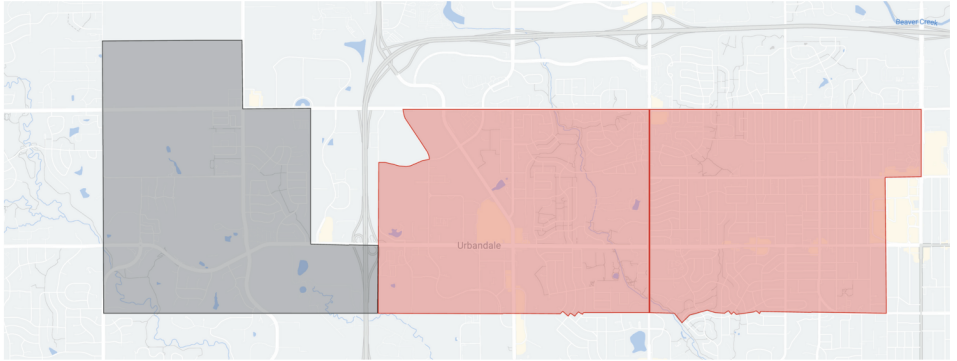


Olmsted Elementary School, 1952



Children playing on UHS Playground, 1950's

# Era 2: 1952-2000



## ***1952-1975: “The Baby Boomers”***

From 1916-1952 all students in the district attended classes in the buildings located at 70th and Douglas. After World War II, the post war “Baby Boom” was underway. The Baby Boom was accompanied by accelerated growth in homebuilding in the suburbs. The 1950 census for Urbandale indicated a population of 1,777. Additional space was needed, especially for elementary students.

In 1952, Olmsted Elementary School was opened, named for Millard A. Olmsted, landowner and former school board member.

In 1953 and 1954, two additions were completed, the south wing and north multipurpose room. The district kitchen was built in 1965 adjacent to the multipurpose room. In the 1950’s the football field was moved from

70th and Douglas to the area south of the Olmsted building.

The buildings at 70th and Douglas became Urbandale Junior-Senior High. Adding the roof and walls between the brick building and the gym in 1955 created an industrial arts room. A few years later the space was converted into the Band room. The industrial arts room was moved to a space behind what eventually became the little bakery on the north side of Douglas.

As the junior-senior high enrollment grew, additional space was leased at 7019 Douglas in 1961 for the industrial arts classes. The existing space was converted to regular classrooms.

The elementary school age population continued growing rapidly. The 1950 K-12 student enrollment was 419, and in 1957 there were 1114 students, nearly tripling in seven years.

## ERA 2: 1952-2000

By 1957, the district was utilizing spaces throughout the community to house elementary students. This continued well into the 1960's until enough buildings and classrooms were built to house all the students in grades K-6. These community spaces included:

- Urbandale Community Church, now the Urbandale United Church of Christ at 70th and Oliver Smith
- American Legion Hall – Dixon Hall-at 68th and Douglas
- Lions Park ShelterHouse at 72nd and Prairie
- Open Bible Church at 68th and Douglas, now Christian Photo
- Gloria Dei Lutheran Church – 8301 Aurora
- Elementary School built in 1964.
- The old house at 7101 Airline on the Olmsted Elementary site, which was later used as the school administration office, has since been demolished
- St. Stephens Lutheran Church at 72nd and Oliver Smith and the house at 3201 74th owned by St. Stephens
- Aldersgate Methodist Church at 76th and Dennis Drive
- The home on the corner of Beechwood and 74th.
- The employee training room at the Sears store in the Merle Hay Shopping Plaza.

After World War II, students residing west of 86th Street could attend Urbandale Schools

or Grimes Schools. In the late 1950's school district consolidations began.

As a result, the residents living in the area bounded by 86th Street on the east, 114th Street on the west, Urbandale Avenue (3000 block) on the south and Meredith Drive on the north wanted to be included in the Urbandale School District.

The City of Urbandale was also growing at this time; however, the city boundaries stretched beyond the school boundaries. Cities and schools do not operate under the same set of state laws. Cities may annex unincorporated lands; school districts may not annex land.

In 1957-58, construction began on Interstate 35/80 west and north of the city. The city boundaries eventually expanded south to Hickman, and north and west to Interstate 35/80. As a result, students living in the City of Urbandale, but north of Meredith attend Johnston Schools and students living south of Urbandale Avenue (3000 block) attend either Des Moines or West Des Moines Schools.

The city and schools continued to grow rapidly, with the 1960 census for Urbandale standing at 5,821 residents, and in 1970 the population had more than doubled to 14,343. In 1959, the first wing of the “new” Urbandale High School was opened at 7111 Aurora, but was originally used by junior high students.



## ERA 2: 1952-2000

After construction of the second wing classrooms, commons and industrial arts room in 1962--Urbandale High School moved permanently to the 36.5-acre site in 1963.

More building additions were quickly constructed to handle the increasing enrollment:

- 1964 : "400 hall" classroom wing and the football field and track constructed at 70th and Aurora
- 1966: "500 hall" open space classroom wing
- 1967: North gymnasium
- 1970: The two-story classroom wing, addition to the commons, district kitchen and additional industrial arts space

As planning for future elementary school facilities began, the community decided that neighborhood schools were appropriate. Buildings throughout the community serve elementary students living in the different neighborhoods.

In succession, these elementary schools were opened in the 1960's:

- 1961: *Blackhurst Elementary*, named for Dr. Herbert Blackhurst, the landowner and a professor at Drake University, was located at 3305-70th on five acres. The building was closed as an Urbandale school in 1984 and sold. It is currently the Iowa School of Beauty.
- 1963: *Valerius Elementary*, named for Litta and Ellen Valerius. Ellen Valerius served on the school board, and her family were landowners and operated the Laddvale Dairy. Their home was located on the present site of HyVee at 86th and Douglas. The Valerius site occupies 11 acres at 92nd and Dewey Gibbs Road.
- 1963: *Jensen Elementary* was named for Isabell Jensen, a long-time mathematics teacher in the district, who had recently passed away. The west wing was added in 1967 on this five-acre site at 64th and Aurora Avenue.



Valerius Elementary School, 2023



## ERA 2: 1952-2000

- 1964: Karen Acres Elementary is located in the Karen Acres neighborhood. Constructed on the former site of the Des Moines Ice and Fuel Company Mine, this seven-acre site is at 74th and Oliver Smith.
- 1968: Rolling Green Elementary is in the Rolling Green neighborhood. The west open space classroom addition was completed in 1969 on this five-acre site at 81st and Airline.

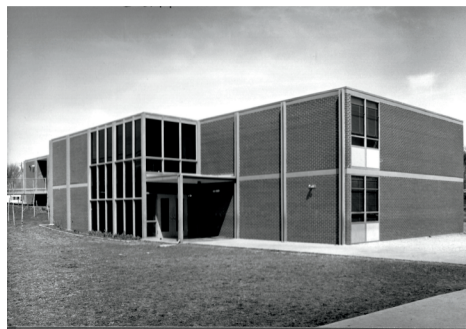
1969: UCSD left the Suburban Athletic Conference and joined the CIC

In 1974, Urbandale Junior High, now Urbandale Middle School, was occupied. Situated on over 32 acres in the 7700 block of Aurora, the seventh and eighth grade pods were constructed with an open space concept, on either side of the library.

In 1975 multipurpose rooms were constructed at Blackhurst, Jensen, Karen Acres and Valerius. These rooms had several functions: physical education instruction, lunchroom, music performances and community rooms during evenings and weekends.

### **1975-2000: "The Echo Boom"**

After the Baby Boom had ended, enrollment peaked in the 1973-74 school year at approximately 3,750 students. For the next several years, declining enrollment occurred. As large senior classes of nearly 300 students were graduating, kindergarten classes of less than 200 students were entering the



**Blackhurst Elementary, 1960**

elementary schools.

K-12 enrollment in the early 1980's was less than 2,800 students. Because fewer elementary classrooms were needed, Blackhurst Elementary School was closed in 1984 and sold to the Iowa School of Beauty. Valerius was closed in 1985 and the classrooms were leased to the Iowa State Extension Service. The original east wing of Olmsted was also closed in 1985 and used for storage.

Urbandale High School, however, had additional space needs. In 1978 a physical education addition east of the north gym provided locker rooms and a wrestling room.

In 1981 a bond issue for the Urbandale Performing Arts Center was approved by nearly 75% of the voters. Long needed by all students, this facility hosted performances by elementary, middle school and senior high students in drama, vocal music, instrumental music, and all kinds of community events. The grand opening of the center was celebrated in February 1983 with *Fine Arts Week*, a celebration of the performing arts.

## ERA 2: 1952-2000

In the 1985-86 school year, the kindergarten enrollment began to swell. Kindergarten classes entering the district had nearly 300 students.

The Echo Boom had begun; the sons and daughters of the Baby Boom generation were becoming school age.

The Echo Boom children combined with a renewal of homebuilding in the district began a new period of enrollment growth in the district.

In order to accommodate the increasing elementary enrollment a change in the grade structure was instituted. The original (east) wing of Olmsted was remodeled to serve as the kindergarten center for all those students entering the district. As the enrollment leveled off at grades seven and eight (junior high), the middle school was created to serve students in grades six, seven, and eight.

The area west of Douglas was the fastest growth area of the district. Valerius was reopened with an addition constructed to handle another section each of first through fifth grade. A 1989 bond referendum provided funds for construction at all the district buildings to provide additional instructional space and enhance programs, including updated media centers at all elementary schools and improved support spaces.

With the planned construction, elementary boundaries were adjusted to fit the following grade structure:

- Kindergarten Center: Olmsted
- Grades 1-5: Jensen, Karen Acres, Olmsted, Rolling Green & Valerius
- Grades 6-8: Urbandale Middle School
- Grades 9-12: Urbandale High School

The 1990's saw an influx of students from other countries, requiring instruction for English language learners. More instructional space was also needed to provide for gifted students and those with special needs and disabilities. As a result, the following construction projects were completed during the 1990's:

- Jensen Media Center and remodeling in 1991, total square footage - 25,020
- Karen Acres Media Center, southwest classrooms and remodeling in 1992, total square footage - 31,050
- Olmsted Media Center and remodeling in 1991, total square footage - 47,260
- Rolling Green Media Center and remodeling in 1991, total square footage - 32,700
- Valerius Media Center and second section of classrooms in 1991, total square footage - 31,050
- Middle School North classroom addition in 1991- this allowed for grades six, seven, and eight, to each occupy its own pod of classrooms around a remodeled media center

## ERA 2: 1952-2000



Retired J-Hawk Logo

- Urbandale High School Music instruction spaces and south gymnasium in 1991 and additional space for the Commons, district kitchen and industrial technology in 1997

In 1991 the Central Iowa Conference became the Central Iowa Metropolitan League (CIML), Urbandale has been in the CIML since its inception.

Beginning in 1993, the K-12 enrollment maintained approximately 3,500-3,600 students. This steadiness in enrollment is partially explained by the open enrollment laws in Iowa. Beginning in 1989, parents could request that their student(s) attend a school district other than their school district of residence.

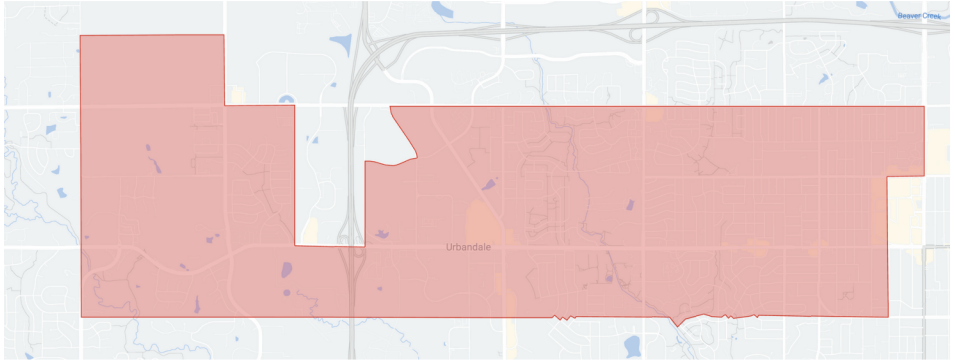
Since that time, the number of students enrolling into the Urbandale Schools has far outnumbered those residing in the district requesting to attend classes in another school district.

As more property in the district was developed, fewer home sites were available for new home construction. The aging population meant fewer school age children. In the late 1990's, discussions began with school board members in the Dallas Center- Grimes Community School District, located west of the Urbandale Community School District.

In the late 1990's the state legislature approved a law allowing each county to request voter approval to increase the sales tax by one cent for ten years to fund school building construction and improvements. Each district was required to prepare a list of projects proposed for completion and the funds in each county were to be apportioned on a per pupil basis.

In 1998 Metro West Academy was introduced as an alternative setting for students that were severely at risk for not graduating. Students with academic and social/emotional challenges made up the bulk of Metro West students. Academics has always been a core facet of Metro West, however in the program's infancy they did not cover all core subject areas and focused on a non-traditional environment to foster academic and personal growth.

# Era 3: 2001–Present



## ***2001-2009: “Entering the 21st Century”***

In 2001, the land swap was completed, Dallas Center-Grimes obtaining developed commercial land east of Interstate 35/80 and Urbandale Schools receiving undeveloped land west of the Interstate to the Polk/Dallas county line in the City of Urbandale.

This increased the size of the Urbandale Community School District to nearly 8 square miles. But the city had grown much farther west, including a portion of the Waukee School District. Urbandale Schools is approximately 8 square miles within the city limits, while the city boundaries include nearly 21 square miles.

Thus, in the City of Urbandale a student, depending on the location of their residence, may attend one of six public school districts:

- Urbandale
- Johnston
- Des Moines
- West Des Moines
- Dallas Center-Grimes
- Waukee

Or two private schools:

- St. Pius X/Dowling Catholic
- Des Moines Christian

Starting in 2001 more staff were added to the Metro West Learning Academy to cover subjects like science, math, English, and physical education.

In 2004, a bond referendum was approved by the voters for an elementary building and the first major phase of construction at Urbandale High School.

As planning began for Urbandale High School, construction was started on the elementary building at 128th and Aurora Avenue.

## ERA 3: 2001-PRESENT



Webster Elementary School, 2023

Webster Elementary School was opened in Fall, 2006. This building is named for the one-room school formerly at this site. This 74,092 square foot elementary school sits on a 17-acre site.

In preparation for opening Webster at the beginning of the 2006-2007 school year, several changes were made district-wide at the elementary level.

First, elementary attendance boundaries were adjusted to accommodate the opening of the new school. Second, the school year calendar at Rolling Green was changed to the “flex calendar” concept. Kindergarten classrooms were located at Rolling Green, Valerius and Webster in addition to the kindergarten center at Olmsted.

Construction of Urbandale High School began in 2006, with students occupying the completed first phase of classrooms in early 2007.

A second bond referendum was approved in 2007 to complete the second phase of construction and renovation of the stadium at 70th and Aurora Avenue. This second phase included new classrooms, a

media center, support areas and a new performing arts center. The only original buildings remaining are the two gymnasiums. Students began to occupy the new facilities at the beginning of the 2009-2010 school year.

### **2009-2017 “What’s new to the U”**

With the passage of the state version of the one cent sales tax in 2008, the decision was made to sell bonds against future receipts of sales tax revenue to finance the renovation of Urbandale Middle School and an expansion out at Webster Elementary School.

The additions made at Webster Elementary, starting in 2009, totaled 15,910 square feet, that included 12 classrooms (four in each wing), two conference rooms/workrooms, and a 40’ x 40’ addition to the commons/lunchroom. In the North and South wing, there are movable partition walls, allowing the center classrooms some flexibility by allowing the rooms to be “opened up.”

Site preparation began in April 2010 for the middle school project and was completed in 2012. The remodeled site was extensive, with the creation of a new commons, gymnasium, and the planned movement toward creating friendlier classrooms full of natural lighting.

On July 1, 2012, the Activities Department merged to incorporate the transition of Community



## ERA 3: 2001-PRESENT

Education from Parks and Recreation and the City of Urbandale's control. With this change, Adventuretime programming was moved under the umbrella of Community Education.

At that time, Adventuretime consisted of before/after school programming, all day programming (breaks/summer), and preschool programming.

In September 2015, Webster Elementary was designated a 2015 National Blue Ribbon School by the U.S. Department of Education.

In 2016, Karen Acres Elementary School began their remodeling efforts with the construction of six larger classrooms, a full-size competition gymnasium, expansion of the kindergarten and first grades rooms, new front office area, and a complete facial for the rest of the building.

### **2017-Present *"The current U"***

With funding available, Olmsted Elementary was demolished and replaced with a new building. Students attending Olmsted from 2019-2021 were housed at Jensen Elementary and Karen Acres Elementary. The new Olmsted Elementary was opened in August 2021. Also opened in August 2021 was the new fitness wing at Urbandale High School.

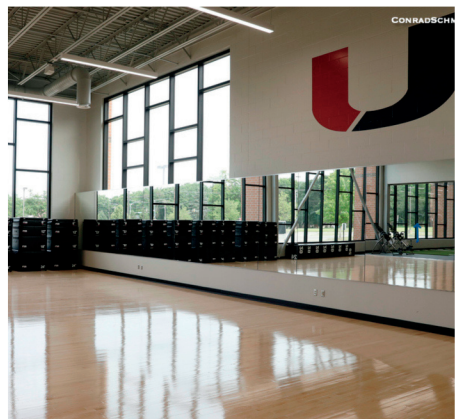
This wing features a weight area, a single lane of track and turf, and a large multi-purpose fitness area with flooring to support activities such as yoga, cheer, and dance practice.



UHS Fitness Center, 2021



UHS Fitness Center, 2021



UHS Fitness Center, 2021

## ERA 3: 2001-PRESENT

In 2021, similar to Olmsted, demolition and work began on Valerius Elementary while students attended Jensen Elementary. The new Valerius Elementary was opened in August 2023.

At the start of the 2023-2024 school year, Rolling Green Elementary closed and moved into Karen Acres Elementary. Karen Acres now offers year round schooling to any elementary student in the UCSD community. Adventuretime Childcare and the Preschool programs also

split at the start of that school year.

In 2023, both Jensen Elementary and Rolling Green were closed. This prompted the elementary school boundaries to be reestablished to balance enrollment.

In 2024, Metro West Learning Academy gained an educationally appropriate home with new construction at 3100 100th St. Karen Acres Elementary also unveiled a new playground.



Metro West Learning Academy, 2024



Karen Acres Playground, 2024



## ERA 3: 2001-PRESENT



**Olmsted  
Elementary  
2023**



**Karen Acres  
Elementary  
2023**



**Urbandale  
Middle School  
2023**



# FUTURE OF UCSD

The Urbandale Community School District has a long history of tradition and support for staff and students. As we look ahead to what comes next, we know the commitment to being a J-Hawk will continue to be important for our alumni and local community. We also know our schools will continue to be supported by our residents and alumni.

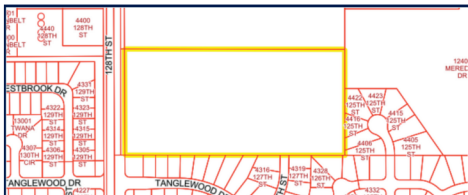
We've gone through a tremendous growth from the beginning of the district to present time. We don't anticipate a huge amount of growth moving forward. We will continue to be a beacon for Open Enrollment as our district is a great place to learn. Living our mission of Teaching All Reaching All, we continue to look for ways to provide options for our students that will help them leave us ready for whatever their future holds.

The coming years will see us increase our partnerships with local businesses including internships, apprenticeships and work-based learning. Through these partnerships, we expect our students to be prepared and excited to return to Urbandale to work and raise families.

We are working hard to bring more experiences and growth opportunities for our youth sports in the community. The partnership with the city of Urbandale, UCSD Athletics and Activities and UCSD Community Education is the perfect vehicle to expand and excel our youth for basketball, wrestling, track/field, flag football and more. We look forward to growing and expanding!

After building two new elementary schools and a fitness center, we find ourselves open land and empty buildings. Work continues on plans to utilize these spaces effectively and efficiently for purposes that benefit our staff and students. At this writing, no final decisions have been made. These spaces include Rolling Green, Jensen site (school has been demolished) and vacant land off Meredith and 128th Street.

Whether you graduated as a Bluejay or a J-Hawk, yesterday or today, you will still be one of us tomorrow! Keep making a difference!



# BUILDING HISTORY

## 1 Jensen Elementary- Closed

- 1963 — Original East Wing
- 1967 — West Wing
- 1975 — Multi- Purpose Room
- 1991 — Media Center
- 2019 — Jensen Elementary Closed
- 2019-21 — Operated as Olmsted Elementary
- 2021-23 — Operated as Valerius Elementary
- 2024 — Building Demolished



Jensen Elementary, 1963



Karen Acres Playground, 1995

## 2 Karen Acres Elementary

- 1964 — Original North Wing
- 1967 — Wood Frame Addition\*
- 1975 — Multi- Purpose Room
- 1991 — Media Center/Classroom Addition
- 2008 — 24'x48' Portable Installed
- 2016 — Relocation of main office, classroom remodel, and new gym
- 2023 — Switched to new Flex Schedule
- 2024 — New Playground Addition

*\* Demolished*

### 3 Olmsted Elementary

- 1952 — Original Wing
- 1953 — South Wing
- 1956 — West Wing & North Multi-Purpose Room
- 1988 — East & Southeast Wings Remodeled
- 1991 — Media Center & West Wings Remodeled
- 1997 — South Multi-Purpose Room
- 2008 — 24'x72' Portable Installed
- 2019-2021 — Demolished & rebuilt on existing site

### 4 Rolling Green Elementary- Closed

- 1968 — Original West Wing
- 1969 — North Wing
- 1990 — North Wing Remodel
- 1991 — Media Center/ West Wing Remodel
- 2023 — Closed

### 5 Valerius Elementary

- 1963 — Original Building
- 1975 — Multi-Purpose Room
- 1985 — Main Building Remodel
- 1986-90 — Leased to ISU
- 1991 — Media Center/ Classroom Addition
- 2021-23 Demolished & rebuilt on existing site

### 6 Webster Elementary

- 2006 — Original Building
- 2010 — Classroom Additions
- 2013 — Parking Lot Addition

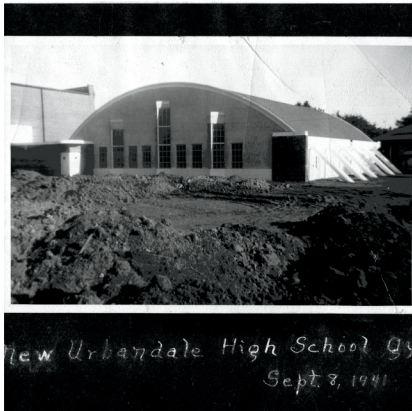
### 7 Urbandale Middle School

- 1974 — Original Building
- 1988 — Music Room Addition
- 1991 — Classroom Addition
- 1992 — East Wing Remodel
- 1993 — Media Center Remodel
- 1994 — West Wing Remodel
- 2001 — East Addition
- 2011 — Gym, Commons, and Classroom Additions

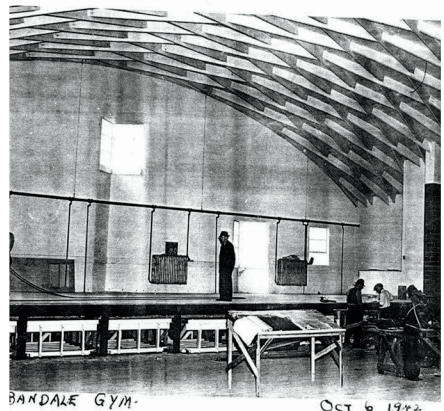
*\* Demolished*

## 8 Metro West Learning Academy

- 1998- Introduction of Metro West
- 2001- Additional staff hired
- 2023- Moved into Rolling Green building
- 2024- Moved into new location



UHS Gym, 1941



UHS Gym, 1942

## 9 Urbandale High School

- 1959 — Original Wing\*
- 1963 — Second Wing, Commons, Wood Shop\*
- 1966 — Third Wing\*
- 1967 — North Gym
- 1968 — Fourth Wing\*
- 1969 — Two Story Wing\*, Kitchen\*, Commons\*, Shop\*
- 1979 — PE Addition
- 1983 — PAC\*
- 1991 — South Gym, Music Rooms\*
- 1997 — Remodel Science Rooms\*, Commons\*, Shop Addition\*
- 1998 — Remodel Offices\*
- 2003 — Phase I Classroom Addition
- 2008 — Phase IIB Addition, Stadium
- 2009 — Phase IIC Addition, Science, Business, Media Center
- 2009 — Phase IID Building Demolition, install Parking Lot
- 2021 — Fitness Center Wing Addition

*\* Demolished*

# UCSD SUPERINTENDENTS

Superintendent history through 1974 is confirmed data. Superintendents prior to 1958 and marked with a \*\* have not been confirmed. Corrections are welcome.

2021 - present	Dr. Rosalie Daca
2015 - 2021	Steve Bass
2010 - 2015	Dr. Doug Stillwell
2001 - 2010	Dr. Greg Robinson
1991 - 2001	Thomas E. Davis
1990-1991	E. Kelly Schlapkohl (Interim)
1983 -1990	Dr. John Cox
1980 - 1983	Ceasre Caldarelli Jr
1974 - 1980	Dr. Bennett Litherland
1958 - 1974	Dr. Lyle W. Kehm
1951-1958**	Norman S. Landess
1938-1951**	W.F. Roseman
1934-1939**	Harry M. McGuire



Retired Blue Jay Logo



Retired Blue Jay Logo



Retired U Logo



# SCHOOL BOARD STUDENT REPRESENTATIVES

In 2022, UCSD added the position of student representatives to the Board of Directors to ensure that student voices are heard in the decision-making process. Although they are not voting members, they are primary stakeholders in the education system. Students offer unique perspectives on how policies and changes directly affect their learning experiences, school environment, and overall well-being. Including student representatives promotes transparency, encourages civic engagement, and helps the board make more informed, inclusive decisions that reflect the needs of the entire school community. Their involvement also empowers students to take an active role in shaping their education.

2022-2023		2023-2024		2024-2025	
McConnell	Ava	Van Horn	Kiersten	Huizenga	Brooke
Rempe	Joe	Hammerand	Matthew	Bowser	Sean
Bonz	Hallie	Bonz	Hallie		
Chaisson-Cardenas	Angelica	Chaisson-Cardenas	Angelica		

**2022-2023:**  
Ava McConnell, Joe Rempe, Hailie Bonz & Angelica Chaisson-Cardenas; School Board & Dr. Daga



**2023-2024:**  
Matthew Hammerand, Kiersten Van Horn, Hailie Bonz & Angelica Chaisson-Cardenas; School Board & Dr. Daga

**2024-2025:**  
Brooke Huizenga, Sean Bowser, & School Board



# SCHOOL BOARD MEMBERS

Board members are noted by school year served. The list includes anyone who served that year including where resignations and replacements occurred.

Corrections and name completions are welcome.

2024-2025		2023-2024		2022-2023		2021-2022		2020-2021	
Howsare	Katherine	Anderson	Ashley	Anderson	Ashley	Andersen	Stacy	Andersen	Stacy
Kent	Rachel	Gutmann	Dan	Gutmann	Dan	Anderson	Ashley	Anderson	Ashley
Meade	Jenny	Howsare	Katherine	Howsare	Katherine	Downs	Judy	Downs	Ashley
Menke	Jason	Kent	Rachel	Kent	Rachel	Howsare	Katherine	Howsare	Katherine
VanRywsyk	Josh	Meade	Jenny	Meade	Jenny	Kent	Rachel	Sayre Geiser	Brianna
Williams	Carissa	Menke	Jason	Menke	Jason	Meade	Jenny	Schmitz	Sarah
Young	Margaret	Sayre Geiser	Brianna	Sayre Geiser	Brianna	Menke	Jason	Smith	Mark
		VanRywsyk	Josh	VanRywsyk	Josh	Sayre Geiser	Brianna		
		Williams	Carissa	Williams	Carissa	Schmitz	Sara		
		Young	Margaret	Young	Margaret	Smith	Mark		
2019-2020		2018-2019		2017-2018		2016-2017		2015-2016	
Andersen	Stacy	Andersen	Stacy	Andersen	Stacy	Cabildo	Aldrich	Applegate	Aaron
Cabildo	Aldrich	Cabildo	Aldrich	Cabildo	Aldrich	Giles	Graham	Cabildo	Aldrich
Downs	Ashley	Downs	Ashley	Downs	Judy	Gunnare	Christopher	Giles	Graham
Howsare	Katherine	Howsare	Katherine	Howsare	Katherine	Howsare	Katherine	Gunnare	Christopher
Ruden	Tanya	Ruden	Tanya	Ruden	Tanya	Obrecht	Adam	Howsare	Katherine
Sayre Geiser	Brianna	Schmitz	Sarah	Schmitz	Sarah	Ruden	Tanya	Newberg	Cate
Schmitz	Sarah	Smith	Mark	Smith	Mark	Wierson	Mark	Ruden	Tanya
Smith	Mark								
2014-2015		2013-2014		2012-2013		2011-2012		2010-2011	
Applegate	Aaron	Applegate	Aaron	Farrell	Jeff	Farrell	Jeff	Farrell	Jeff
Farrell	Jeff	Farrell	Jeff	Judas	Ryan	Judas	Ryan	Judas	Ryan
Gunnare	Chris	Gunnare	Chris	Kruidenier	Kyle	Kruidenier	Kyle	Obrecht	Adam
Judas	Ryan	Judas	Ryan	Newberg	Cate	Munyon	Cynthia	St. John	Shawn
Kruidenier	Kyle	Kruidenier	Kyle	Obrecht	Adam	Newberg	Cate	Munyon	Cynthia
Newberg	Cate	Newberg	Cate	St. John	Shawn	Obrecht	Adam	Newberg	Cate
Obrecht	Adam	Obrecht	Adam	Wierson	Mark	St. John	Shawn	Wierson	Mark
St. John	Shawn	St. John	Shawn			Wierson	Mark		
Wierson	Mark	Wierson	Mark						

# SCHOOL BOARD MEMBERS

2009-2010		2008-2009		2007-2008		2006-2007		2005-2006	
Farrell	Jeff	Farrell	Jeff	Farrell	Jeff	Farrell	Jeff	Gulling	Doug
Judas	Ryan	Gulling	Doug	Gulling	Doug	Gulling	Doug	Munyon	Cynthia
Obrecht	Adam	Munyon	Cynthia	Munyon	Cynthia	Munyon	Cynthia	Ripperger	Diana
St. John	Shawn	Newberg	Cate	Newberg	Cate	Ripperger	Diana	Schuler	Steve
Munyon	Cynthia	Ripperger	Diana	Ripperger	Diana	Schuler	Steve	Tormey	Jerry
Newberg	Cate	St. John	Shawn	Tormey	Jerry	Tormey	Jerry	Weeg	Theresa
Wierson	Mark	Wierson	Mark	Wierson	Mark	Wood	Kirby	Wood	Kirby
2004-2005		2003-2004		2002-2003		2001-2002		2000-2001	
Gulling	Doug	Getter	Doug	Getter	Doug	Getter	Doug	Frakes	Kristine
Munyon	Cynthia	Munyon	Cynthia	Munyon	Cynthia	Munyon	Cynthia	Getter	Doug
Ripperger	Diana	Ripperger	Diana	Ripperger	Diana	Ripperger	Diana	Goodman	Chuck
Schuler	Steve	Schuler	Steve	Schuler	Steve	Schuler	Steve	Isaacson	Connie
Tormey	Jerry	Tormey	Jerry	Tormey	Jerry	Tormey	Jerry	Kent	Jill
Weeg	Theresa	Weeg	Theresa	Weeg	Theresa	Weeg	Theresa	Munyon	Cynthia
Wood	Kirby	Wood	Kirby	Wood	Kirby	Wood	Kirby	Rich	Terry
								Ripperger	Diana
								Weeg	Theresa
1999-2000		1998-1999		1997-1998		1996-1997		1995-1996	
Finnerty	Pat	Finnerty	Pat	Finnerty	Pat	Dannewitz	Karen	Dannewitz	Karen
Getter	Doug	Getter	Doug	Getter	Doug	Finnerty	Pat	Finnerty	Pat
Goodman	Chuck	Goodman	Chuck	Kopf	Steve	Getter	Doug	Getter	Doug
Kent	Jill	Kent	Jill	Rich	Terry	Kopf	Steve	Rich	Terry
Kopf	Steve	Kopf	Steve	Strohmaier	Al	Rich	Terry	Strohmaier	Al
Rich	Terry	Rich	Terry	Waddell	Shannon	Strohmaier	Al	Waddell	Shannon
Strohmaier	Al	Strohmaier	Al	Wilkinson	Joni	Waddell	Shannon	Wilkinson	Joni
						Wilkinson	Joni		
1994-1995		1993-1994		1992-1993		1991-1992		1990-1991	
Dannewitz	Karen	Dannewitz	Karen	Dickey	Wendell	Dickey	Wendell	Dickey	Wendell
Dickey	Wendell	Dickey	Wendell	Dunbar	Darlene	Dunbar	Darlene	Dunbar	Darlene
Finnerty	Pat	Finnerty	Pat	Finnerty	Pat	Finnerty	Pat	Finnerty	Pat
Isaacson	Connie	Isaacson	Connie	Greaves	Mike	Greaves	Mike	Greaves	Mike
Pelley	Frank	Pelley	Frank	Isaacson	Connie	Isaacson	Connie	Isaacson	Connie
Rich	Terry	Rich	Terry	McMullen	LD	Pelley	Frank	Pelley	Frank
Strohmaier	Al	Strohmaier	Al	Pelley	Frank	Waddell	Shannon	Waddell	Shannon
Waddell	Shannon	Waddell	Shannon	Waddell	Shannon				
1989-1990		1988-1989		1987-1988		1986-1987		1985-1986	
Dickey	Wendell	Brodie	Bob	Brodie	Bob	Aschenbrenner	John	Aschenbrenner	John
Dunbar	Darlene	Dickey	Wendell	Dickey	Wendell	Dickey	Wendell	Dickey	Wendell
Finnerty	Pat	Finnerty	Pat	Dunbar	Darlene	Dunbar	Darlene	Dunbar	Darlene
Greaves	Mike	Greaves	Mike	Finnerty	Pat	Finnerty	Pat	King	John
Kollmorgen	Marilyn	Kollmorgen	Marilyn	Greaves	Mike	King	John	Koeppel	James
Pelley	Frank	Pelley	Frank	Kollmorgen	Marilyn	Koeppel	James	Kollmorgen	Marilyn
Waddell	Shannon	Waddell	Shannon	McMullen	LD	Kollmorgen	Marilyn	McMullen	LD
						McMullen	LD		



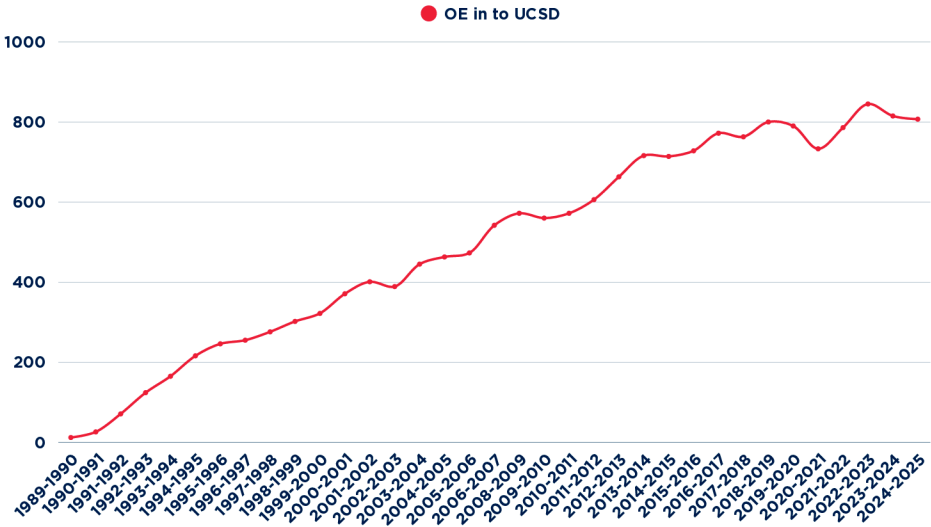
# SCHOOL BOARD MEMBERS

1984-1985		1983-1984		1982-1983		1981-1982		1980-1981	
Aschenbrenner	John	Aschenbrenner	John	Baker	Betty	Baker	Betty	Baker	Betty
Dickey	Wendell	Baker	Betty	Chase	Marian	Carlstrom	Jane	Carlstrom	Jane
Dunbar	Darlene	Dickey	Wendell	Courtright	Don	Chase	Marian	Chase	Marian
King	John	Dunbar	Darlene	Dickey	Wendell	Courtright	Don	Kite	Anite
Koeppel	James	Koeppel	James	Dunbar	Darlene	McMullen	LD	Noteboom	Wendell
Kollmorgen	Marilyn	McMullen	LD	McMullen	LD	Noteboom	Wendell	Pack	Don
McMullen	LD	Schneider	Jon	Wortman	Bob	Pack	Don	Wortman	Bob
						Wortman	Bob		
1979-1980		1978-1979		1977-1978		1976-1977		1975-1976	
Baker	Betty	Applegate	Everett	Carlstrom	Jane	Carlstrom	Jane	Carlstrom	Jane
Carlstrom	Jane	Baker	Betty	Chase	Marian	Chase	Marian	Chase	Marian
Chase	Marian	Carlstrom	Jane	Kite	Anite	Kite	Anite	Daugherty	Roger
Kite	Anite	Chase	Marian	Murano	John	Nelson	Gerald	Dickinson	Darrell
Noteboom	Wendell	Kite	Anite	Toma	James	Toma	James	Kite	Anite
Pack	Don	Murano	John	Winger	Ed	Winger	Ed	Nelson	Gerald
Wortman	Bob	Noteboom	Wendell	Wortman	Bob	Wortman	Bob	Winger	Ed
		Toma	James					Wortman	Bob
		Winger	Ed						
		Wortman	Bob						
1974-1975		1973-1974		1972-1973		1971-1972		1970-1971	
Berrier	Bill	Berrier	Bill	Dickinson	Darrell	Dickinson	Darrell	Dickinson	Darrell
Daugherty	Roger	Daugherty	Roger	Haverty	Joe	Haverty	Joe	Haverty	Joe
Dickinson	Darrell	Dickinson	Darrell	Johnson	Nick	Johnson	Nick	Johnson	Nick
Nelson	Gerald	Johnson	Nick	Lynes	Dick	Lynes	Dick	Lynes	Dick
Nichols	Jack	Nelson	Gerald	Nichols	Jack	Nichols	Jack	Nichols	Jack
Winger	Ed	Nichols	Jack	Oliver	Mary	Oliver	Mary	Oliver	Mary
Wortman	Bob	Winger	Ed	Winger	Ed	Rodenberg	Joe	Rodenberg	Joe
		Wortman	Bob	Wortman	Bob	Winger	Ed		
1969-1970		1968-1969		1967-1968		1966-1967		1965-1966	
Haverty	Joe	Haverty	Joe	Bray	George	Bray	George	Bray	George
Hughes	Ron	Hughes	Ron	Carey	Al	Carey	Al	Carey	Al
Johnson	Nick	Johnson	Nick	Hall	Rex	Hall	Rex	Hall	Rex
Nichols	Jack	Nichols	Jack	Hughes	Ron	Hughes	Ron	Hughes	Ron
Rodenberg	Joe	Rodenberg	Joe	Krueger	Robert	Wobken	Cliff	Smith	Virgil
				Seward	Lyle				
				Wobken	Cliff				
1964-1965		1963-1964		1962-1963		1961-1962		1960-1961	
Bray	George	Allen	Courtney	Allen	Courtney	Allen	Courtney	Rasmussen	Vern
Carey	Al	Boten	Max	Boten	Max	Boten	Max	Boten	Max
Hall	Rex	Bray	George	Bray	George	Bray	George	Bray	George
Hughes	Ron	Reynolds	Harry	Reynolds	Harry	Reynolds	Harry	Reynolds	Harry
Smith	Virgil	Smith	Virgil	Smith	Virgil	Smith	Virgil	Smith	Virgil
1959-1960		1958-1959		1957-1958		1956-1957		1955-1956	
Rasmussen	Vern	Ahern	James	Ahern	James	Ahern	James	Ahern	James
Boten	Max	Reynolds	Harold	Reynolds	Harold	Cline	Carroll	Brown	Ray
Bray	George	Roetman	Melvin	Roetman	Melvin	Reynolds	Harold	Cline	Carroll
Reynolds	Harry	Smith	Virgil	Smith	Virgil	Roetman	Melvin	Reynolds	Harold
Smith	Virgil	Valerius	Mrs John	Valerius	Mrs John	Valerius	Mrs John	Valerius	Mrs John

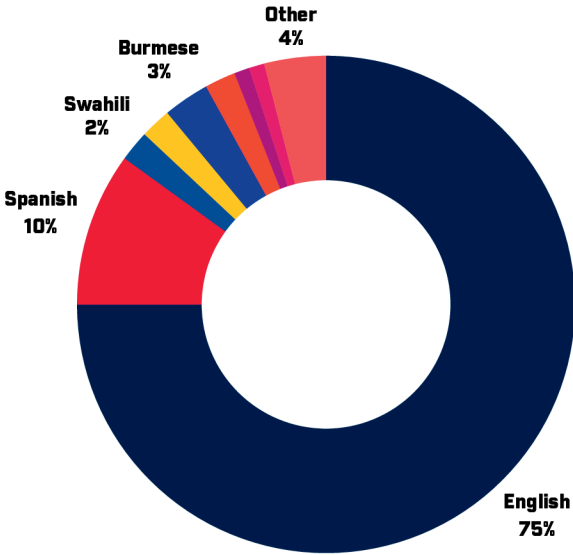
# SCHOOL BOARD MEMBERS

1954-1955		1953-1954		1952-1953		1951-1952		1950-1951	
Brown	Ray	Brown	Ray	Brown	Ray	Brown	Ray	Brown	Ray
Cline	Carroll	Cline	Carroll	Cline	Carroll	Cline	Carroll	Schmitt	(?)
Jardine	Ed	Jardine	Ed	Jardine	Ed	Jardine	Ed	Jardine	Ed
Spiller	Doris	Spiller	Doris	Spiller	Doris	Noble	Dick	Noble	Dick
Valerius	Mrs John	Valerius	Mrs John	Valerius	Mrs John	Valerius	Mrs John	Valerius	Mrs Ellen
								Incomplete listing	
1949-1950		1948-1949		1947-1948		1946-1947		1945-1946	
Evans	Martin	Dunn	Newton	Dunn	Newton	Dunn	Newton	McCann	Hal
Jardine	Ed	Garner	Art	Garner	Art	Garner	Art	Murphy	Mrs Don
Schmitt	(?)	Schmitt	(?)	Rusk	Clay	Rusk	Clay	Rusk	Clay
Vandermulen	Ben	Vandermulen	Ben	Vandermulen	Ben	Vandermulen	Ben	Vandermulen	Ben
Wilson	LA	Wilson	LA	Wilson	LA	Wilson	LA	Wilson	LA
Incomplete listing		Incomplete listing							
1944-1945		1943-1944		1942-1943		1941-1942		1940-1941	
Doyle	FF	McCann	Hal	Brown	James	Brown	James	Gutfreund	Harold
Keller	(?)	Murphy	Mrs Don	McCann	Hal	McCann	Hal	Mauke	(?)
McCann	Hal	Stuart	HW	Nelander	Will	Nelander	Will	Nelander	Will
Murphy	Mrs Don	Visser	Martin	Stuart	HW	Visser	Martin	Phillips	Clifton
Vandermulen	Ben	Wilson	LA	Visser	Martin	Witmer	Roy	Witmer	Roy
Wilson	LA								
Incomplete listing								Incomplete listing	
1939-1940		1938-1939		1937-1938		1936-1937		1935-1936	
Gutfreund	Harold	Bedwell	Gerald	Bedwell	Gerald	Bonebroke	(?)	Bonebroke	(?)
Mapes	Earl	Mapes	Earl	Bonebroke	(?)	Stevenson	BC	Byrd	Alvin
Nelander	Will	Nelander	Will	Nelander	Will			Stevenson	BC
Phillips	Clifton	Phillips	Clifton	Stevenson	BC				
Witmer	Roy	Witmer	Roy	Witmer	Roy				
				Incomplete listing		Incomplete listing		Incomplete listing	
1934-1935		1933-1934		1932-1933		1931-1932		1930-1931	
Bonebroke	(?)	Bonebroke	(?)	Bonebroke	(?)	Atherton	(?)	Atherton	(?)
Byrd	Alvin	Byrd	Alvin	Eby	James	Bonebroke	(?)	Birkinbine	(?)
Stevenson	BC	Eby	James	Lamb	Mrs HD	Eby	James	Bonebroke	(?)
		Laverrenz	(?)	Laverrenz	(?)	Lamb	Mrs HD	Hartsook	(?)
		Stevenson	BC	Stevenson	BC	Laverrenz	(?)	Lamb	Mrs HD
Incomplete listing		Incomplete listing		Incomplete listing		Incomplete listing		Incomplete listing	
1929-1930		1928-1929		1927-1928		1926-1927		1925-1926	
Birkinbine	(?)	Birkinbine	(?)	Bonebroke	(?)	Bonebroke	(?)	Olmsted	(?)
Bonebroke	(?)	Bonebroke	(?)	Hartsook	(?)	Brundage	(?)	Wriom	(?)
Hartsook	(?)	Hartsook	(?)	Lamb	Mr HD	Hartsook	(?)	Rowen	(?)
Lamb	Mrs HD	Lamb	Mrs HD	Olmsted	(?)	Olmsted	(?)	Hartsook	(?)
Valerius	Mrs	Valerius	Mrs	Valerius	Mrs Letta	Stolls	(?)	Westover	Sue
								Brundage	(?)
Incomplete listing		Incomplete listing		Incomplete listing		Incomplete listing		Incomplete listing	

# DATA

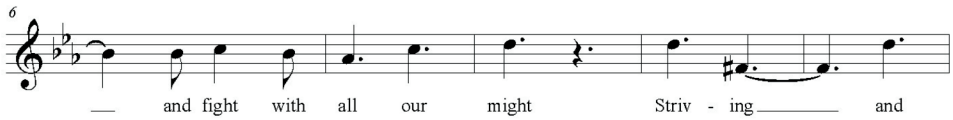
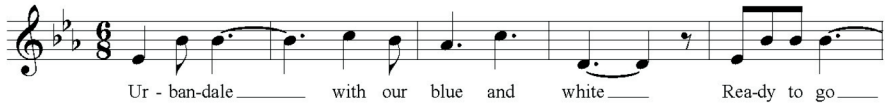


## Languages Spoken by UCSD Families



# Confidence

## The Urbandale High School J-Hawk Fight Song



# SOURCES

- Department of Education. (n.d.). *Certified enrollment public school districts*. Iowa Department of Education. <https://educate.iowa.gov/pk-12/data/data-collections/certified-enrollment/public-schools>
- Department of Education. (n.d.). *License search*. Iowa Department of Education. <https://educate.iowa.gov/educator-licensure/license-search>
- ERIC - Education Resources Information Center. (n.d.). <https://files.eric.ed.gov>
- Hamilton, L. (1967). *Around home, Urbandale*.
- Iowa Department of Education & Iowa Department of Public Instruction. (n.d.). *Iowa educational directory*. State of Iowa.
- Iowa Publications Online. (n.d.). *List of school districts in each of the 15 areas for the improvement of education in Iowa schools, 1977-1988*. <https://publications.iowa.gov/id/eprint/25076>
- Nelson, M. C. (1974). *Listening and learning: Urbandale*.
- Savage, T. (2007). *A dictionary of Iowa place names*. University of Iowa Press.
- Urbandale Chamber of Commerce. (n.d.). <https://uniquelyurbandale.com/>
- City of Urbandale. (n.d.). <https://www.urbandale.org/>
- Urbandale Community School District. (n.d.). *Archives and staff*.
- Urbandale High School. (1998). *Urbandale High School alumni directory*.
- Urbandale High School. (2008). *Urbandale High School alumni directory*.
- Urbandale High School. (1939). *UHS school newspaper*.
- Urbandale High School. (1940-1941). *Director of Urbandale Schools*.
- Urbandale High School. (1951). *UHS yearbook*.
- *Urbanews*.
- *Urbandale News*.
- *Urbandale Press Citizen*.

